

Figure 1. Education Lorenz Curve

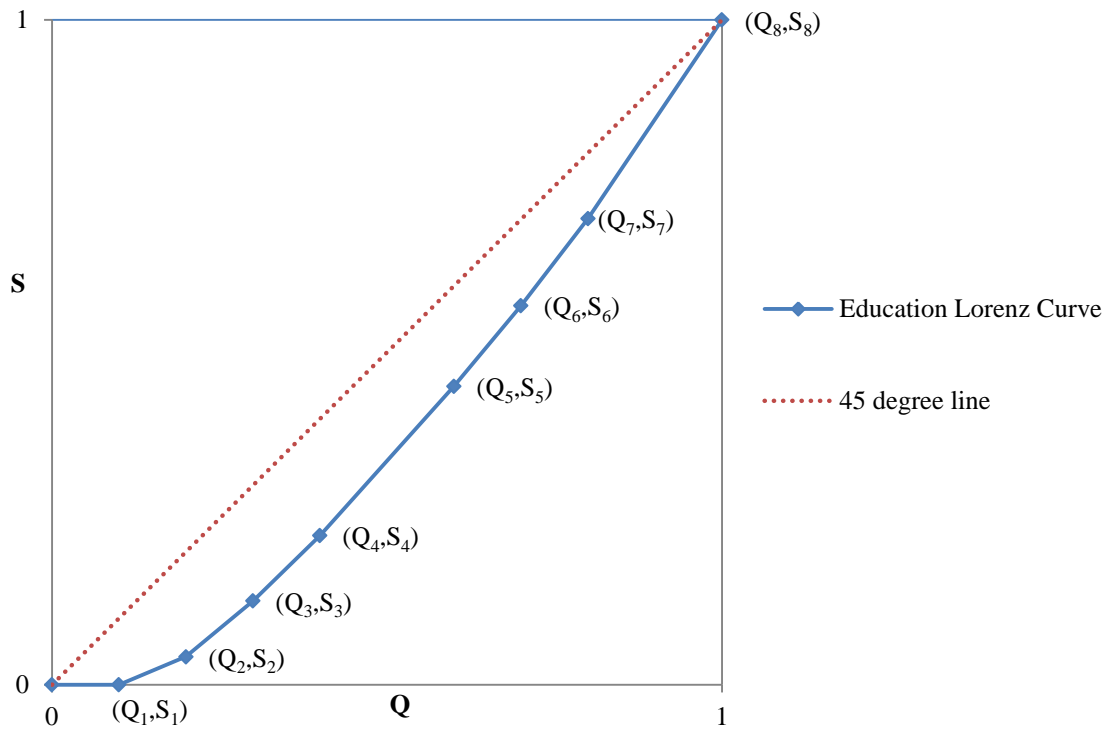


Figure 2. Education Lorenz Curve (1980/2000)

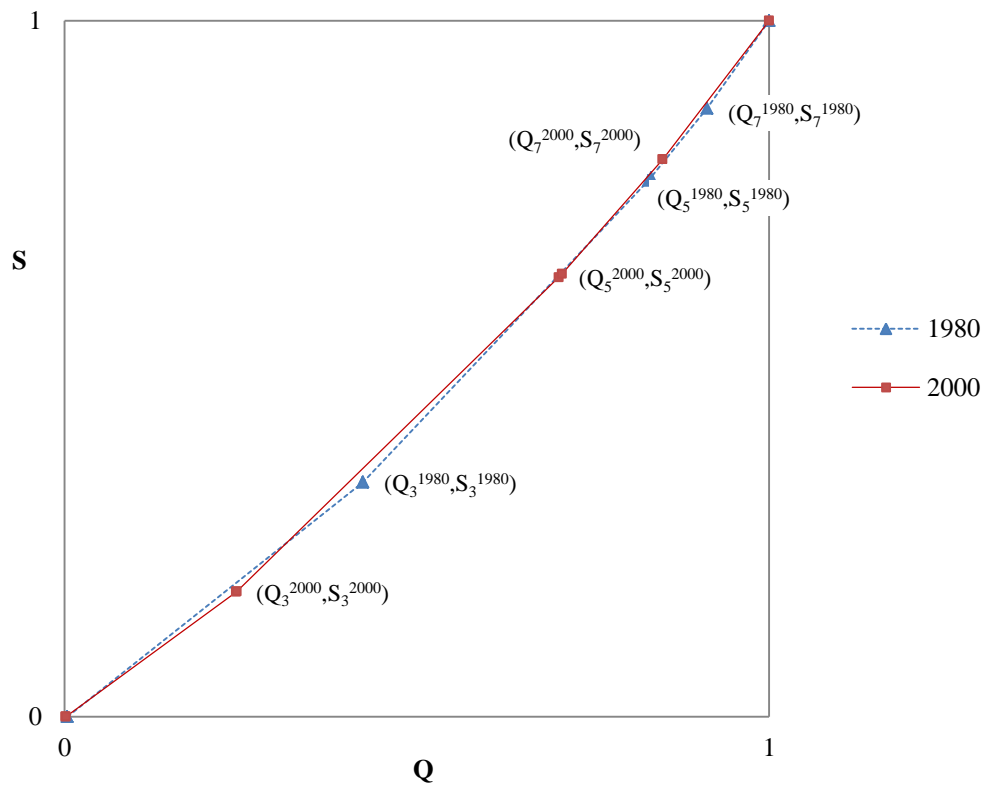


Figure 3. Education Lorenz Curve for Males and Females

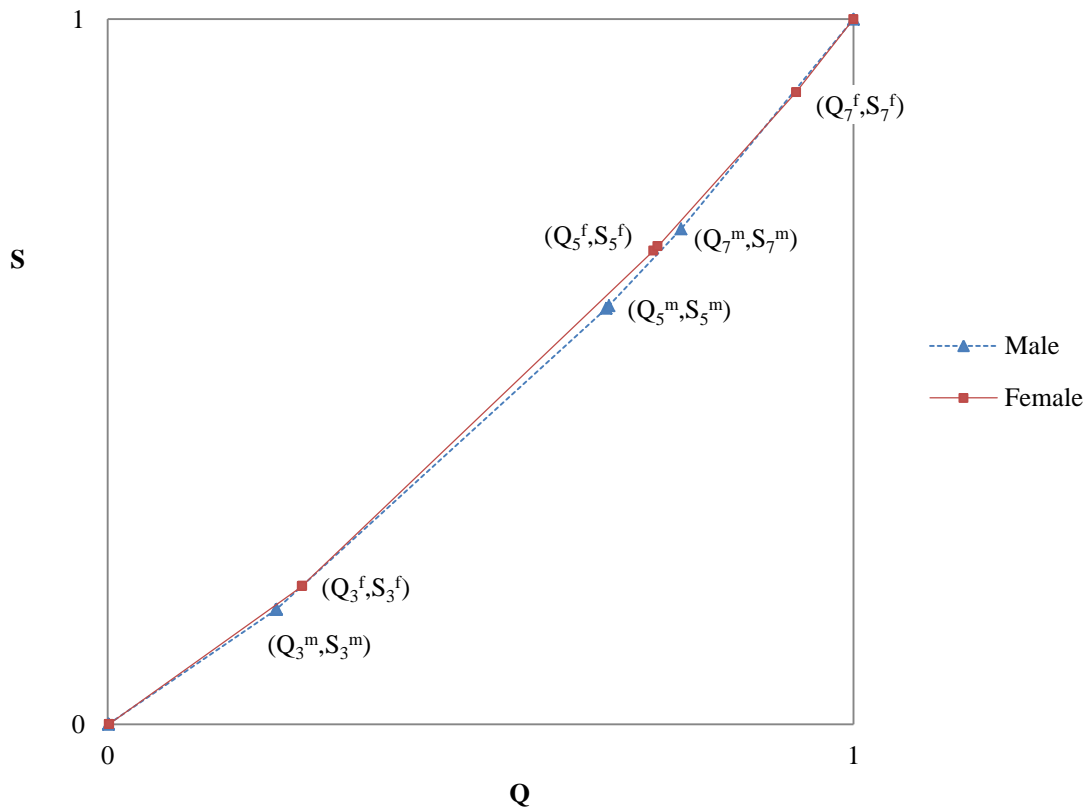


Figure 4. Gini Education Coefficient by Age Group

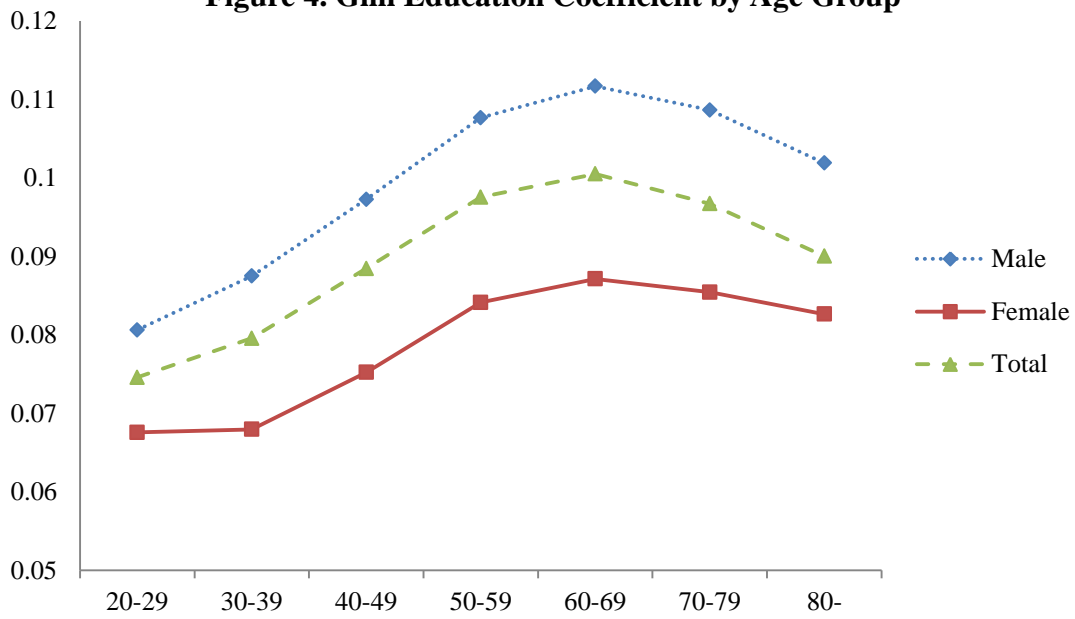


Figure 5. Education Lorenz Curve by Age Groups (60-69/80-)

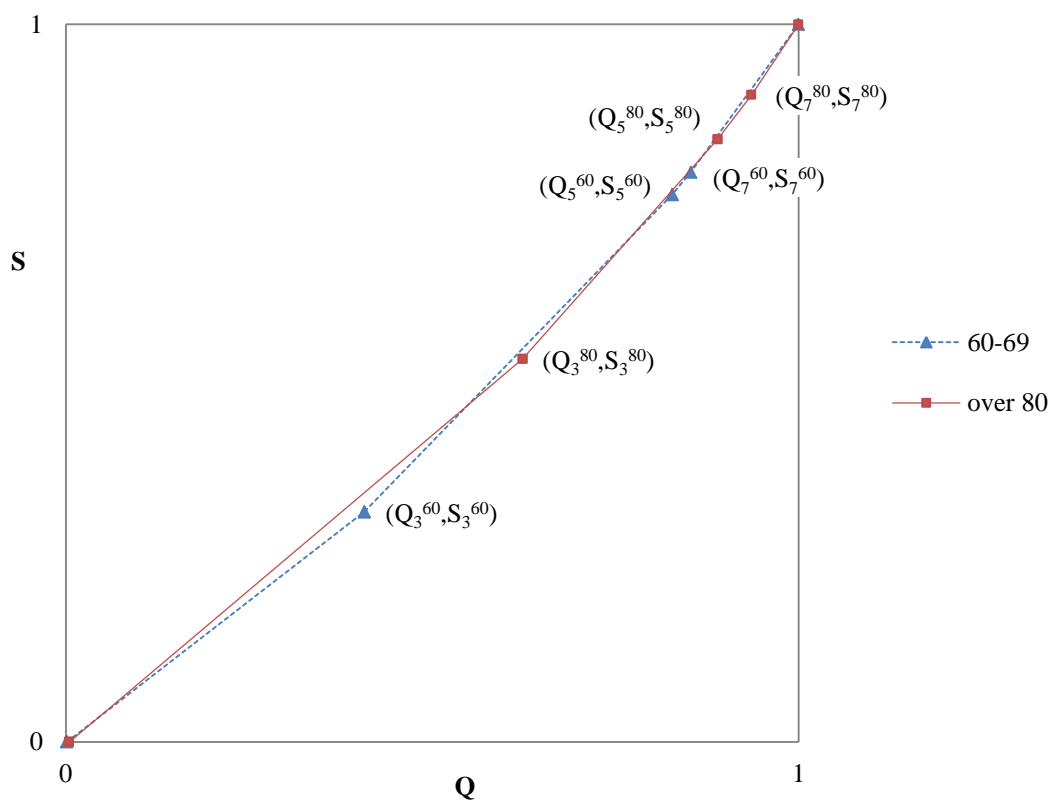


Figure 6. Education Lorenz Curve by Age Groups (20-29/60-69)

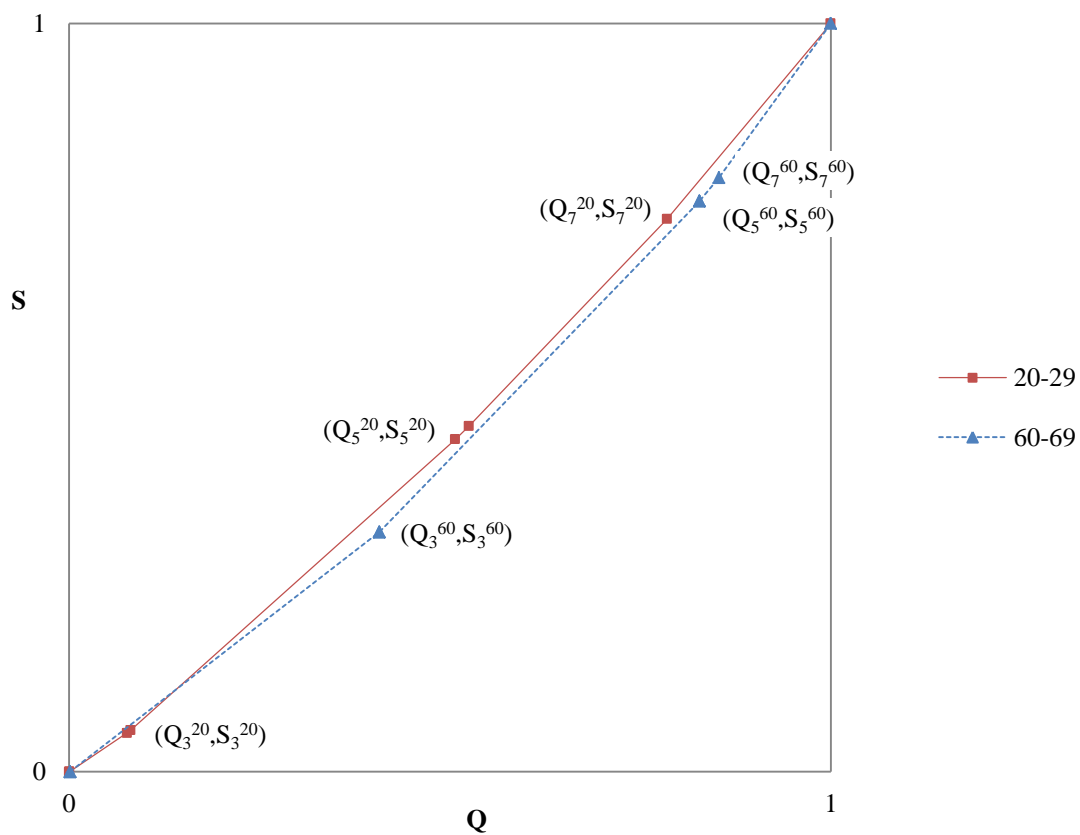


Figure 7. Education Gini and Average Years of Schooling

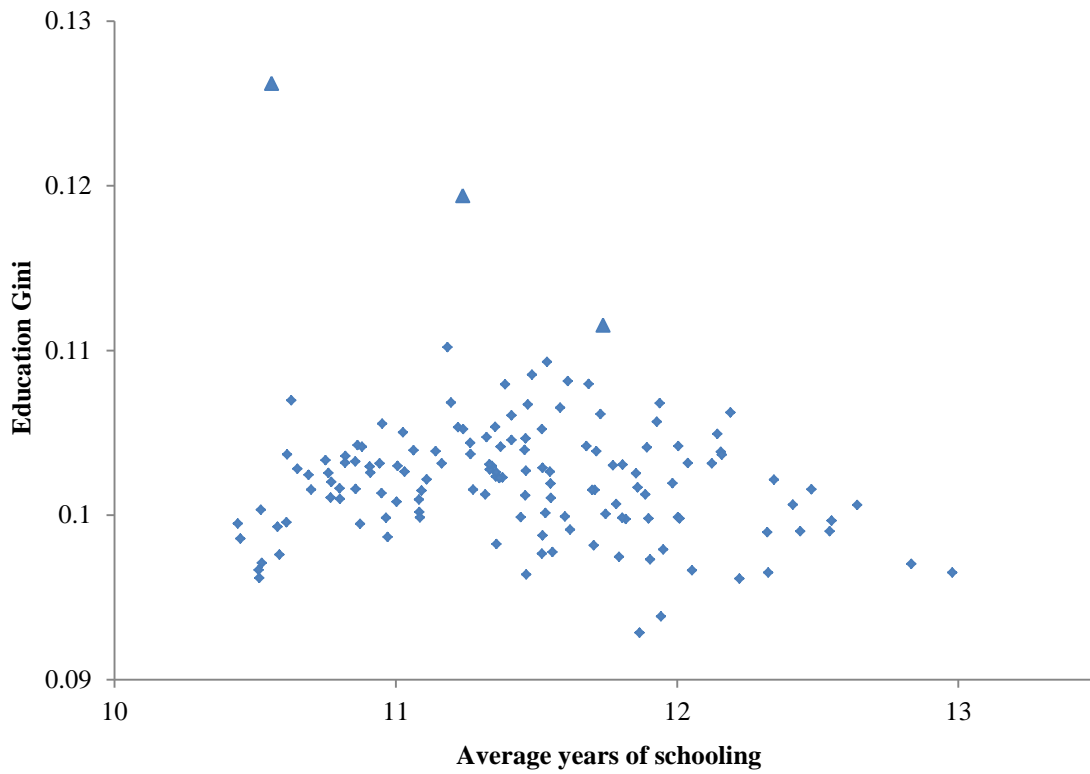


Figure 8. Education Lorenz Curve (Tokyo/Okinawa)

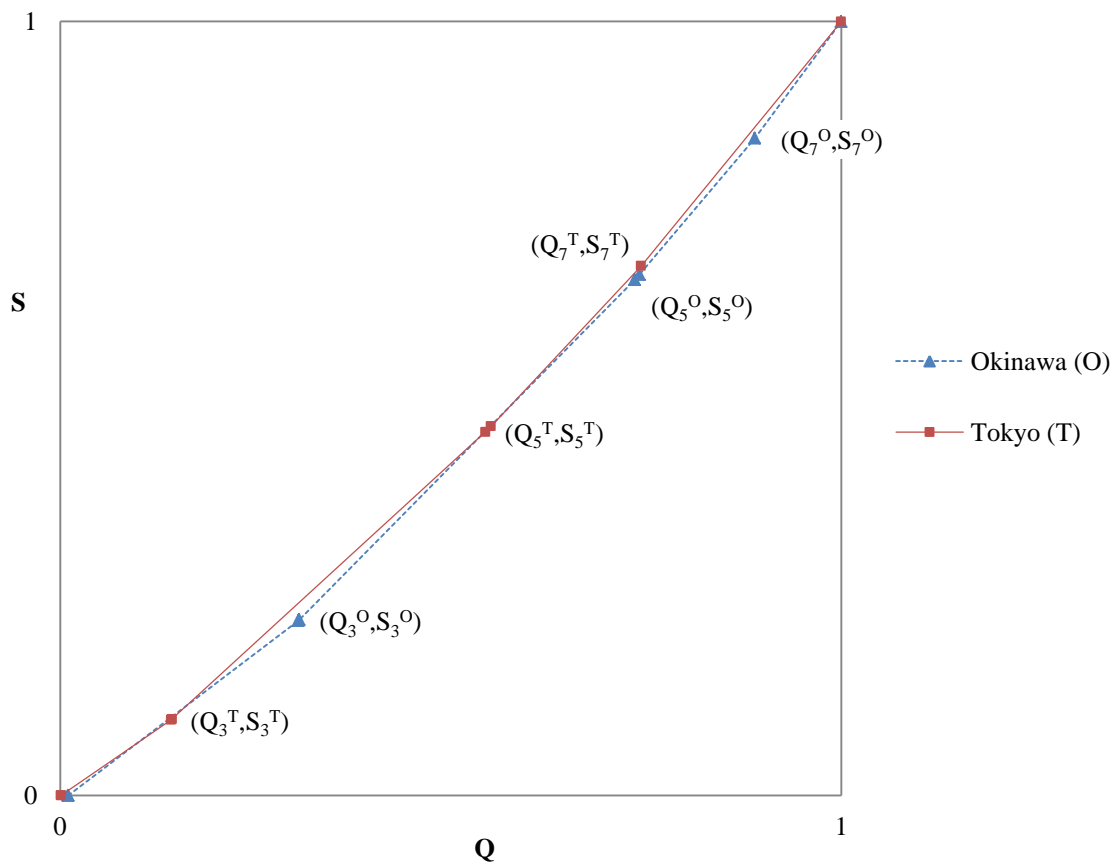


Figure 9. Education Lorenz Curve (Tokyo/Akita)

